

PARK FACILITIES RENTAL GUIDE



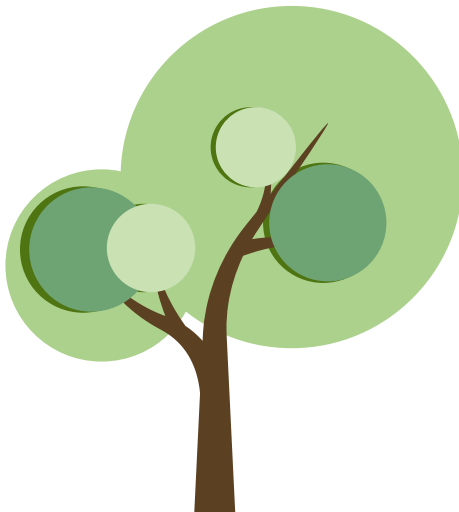
The City of San Marcos has 24 designated reservable park picnic shelters at 14 different City parks that may be reserved to host your next celebration.

Rental Policies & Procedures

- A reservation must be made for groups of 25 people or more and/or groups who wish to have an inflatable or pony/petting zoo.
- Groups under 25 people can still make a reservation or choose to use the park on a first come first serve basis.
- Reservable park picnic shelters can be reserved **on-line** a minimum of **8 days in advance** of your desired date at: www.sanmarcosca.gov/register or in person at the **Parks and Recreation office at least 4 business days in advance** of your desired date.
- Reservations are paid in full at the time of booking. Park Shelter reservations are non-refundable. Please see Refund Policy on-line for more details.



Reservations do not guarantee or include exclusive use of nearby park amenities. Play areas, grass fields, restrooms, etc. remain available to the general public as well as to your group.



Contact us

For further information, please reach out to us.



760-744-9000



parksandrec@sanmarcosca.gov



3 Civic Center Drive,
San Marcos CA 92069

Facilities Overview

RESERVATION TYPE	PARK SHELTER LOCATION	Flat Rate	Peak Season Flat Rate	Non Peak Season Flat Rate
		FOUR HOUR	FULL DAY	FULL DAY
Small 0-50 people	<ul style="list-style-type: none"> • Buelow • Double Peak Gazebo • Jack's Pond East • Las Posas • Mulberry Park • Simmons • Woodland West 	\$82	\$124	\$82
Medium 50-100 people	<ul style="list-style-type: none"> • Connors • Double Peak Amphitheater • Hollandia • Jack's Pond Corral • Lakeview/Discovery • Las Abejas • San Elijo • Sunset East • Walnut Grove North • Woodland East • Woodland North • Woodland Schoolside 	\$103	\$155	\$103
Large 100-200 people	<ul style="list-style-type: none"> • San Elijo Gazebo • Sunset West • Walnut Grove South • Walnut Grove Central • Woodland Pepper 	\$129	\$191	\$129
PEAK SEASON: Apr. 1 – Oct. 31 NON-PEAK SEASON: Nov. 1 – Mar. 31				
FOUR HOUR TIME SLOTS 9 a.m.–1 p.m. or 1:30–5:30 p.m.		FULL DAY TIME FRAME 9 a.m.–5:30 p.m.		

Reservations do not guarantee or include exclusive use of nearby park amenities. Playgrounds, restrooms and other park amenities remain available to the general public as well as to your group. Park hours are sunrise to sunset year around.

Buelow Park Shelter

300 AUTUMN DRIVE

Park Features

- Up to 50 People
- 3 Sheltered Tables
- Playground
- 2 Half Basketball Courts
- Splash Pad
- Restrooms
- ⊗ **No Jumpouse Permitted**



RESERVATION TYPE	Flat Rate	Peak Season Flat Rate	Non Peak Season Flat Rate
	FOUR HOUR	FULL DAY	FULL DAY
Small 0-50 people	\$82	\$124	\$82
PEAK SEASON: Apr. 1 – Oct. 31 NON-PEAK SEASON: Nov. 1 – Mar. 31			
FOUR HOUR TIME SLOTS 9 a.m.–1 p.m. or 1:30–5:30 p.m.	FULL DAY TIME FRAME 9 a.m.–5:30 p.m.		

Connors Park Shelter

320 WEST SAN MARCOS BLVD.

Park Features

- Up to 100 People
- 5 Sheltered Tables
- 2 Playgrounds
- Basketball Courts
- Synthetic Turf Field
- Restrooms
- ⊗ **No Jumhouse Permitted**



RESERVATION TYPE	Flat Rate	Peak Season Flat Rate	Non Peak Season Flat Rate
	FOUR HOUR	FULL DAY	FULL DAY
Medium 50–100 people	\$103	\$155	\$103
PEAK SEASON: Apr. 1 – Oct. 31 NON-PEAK SEASON: Nov. 1 – Mar. 31			
FOUR HOUR TIME SLOTS 9 a.m.–1 p.m. or 1:30–5:30 p.m.	FULL DAY TIME FRAME 9 a.m.–5:30 p.m.		

Double Peak Park Amphitheater

910 DOUBLE PEAK DRIVE

Park Features

- Up to 100 People
- 1 Reservable Area
- 1 Adventure Playground
- Trails
- Restrooms
- ⊗ **No Jumprope Permitted**
- ⊗ **No BBQ or Grilling allowed at this location**



	Flat Rate	Peak Season Flat Rate	Non Peak Season Flat Rate
RESERVATION TYPE	FOUR HOUR	FULL DAY	FULL DAY
Medium 50-100 people	\$103	\$155	\$103
PEAK SEASON: Apr. 1 – Oct. 31 NON-PEAK SEASON: Nov. 1 – Mar. 31			
FOUR HOUR TIME SLOTS 9 a.m.-1 p.m. or 1:30-5:30 p.m.	FULL DAY TIME FRAME 9 a.m.-5:30 p.m.		

Double Peak Park Gazebo

910 DOUBLE PEAK DR.

Park Features

- Up to 50 People
- 3 Sheltered Tables
- 1 Adventure Playground
- Trails
- Restrooms
- ⊗ **No Jumhouse Permitted**
- ⊗ **No BBQ Grills or Grilling allowed at this location**



RESERVATION TYPE	Flat Rate	Peak Season Flat Rate	Non Peak Season Flat Rate
	FOUR HOUR	FULL DAY	FULL DAY
Small 0-50 people	\$82	\$124	\$82
PEAK SEASON: Apr. 1 – Oct. 31 NON-PEAK SEASON: Nov. 1 – Mar. 31			
FOUR HOUR TIME SLOTS 9 a.m.–1 p.m. or 1:30–5:30 p.m.	FULL DAY TIME FRAME 9 a.m.–5:30 p.m.		

Hollandia Park

12 MISSION HILLS COURT

Park Features

- Up to 100 People
- 1 Sheltered Table
- 2 Softball Fields
- 1 Soccer field
- Playground
- Skate Park
- Restrooms
- ✔ Jumpers Permitted



RESERVATION TYPE	Flat Rate FOUR HOUR	Peak Season Flat Rate FULL DAY	Non Peak Season Flat Rate FULL DAY
Medium 50–100 people	\$103	\$155	\$103
PEAK SEASON: Apr. 1 – Oct. 31 NON-PEAK SEASON: Nov. 1 – Mar. 31			
FOUR HOUR TIME SLOTS 9 a.m.–1 p.m. or 1:30–5:30 p.m.	FULL DAY TIME FRAME 9 a.m.–5:30 p.m.		

Jack's Pond Park East

986 LA MOREE ROAD

Park Features

- Up to 50 People
- 3 Sheltered Table
- Playground
- Nature Center
- Trails
- Restrooms
- ⊗ No Jumpouse Permitted
- ⊗ No BBQ



RESERVATION TYPE	Flat Rate	Peak Season Flat Rate	Non Peak Season Flat Rate
	FOUR HOUR	FULL DAY	FULL DAY
Small 0-50 people	\$82	\$124	\$82
PEAK SEASON: Apr. 1 – Oct. 31 NON-PEAK SEASON: Nov. 1 – Mar. 31			
FOUR HOUR TIME SLOTS 9 a.m.–1 p.m. or 1:30–5:30 p.m.	FULL DAY TIME FRAME 9 a.m.–5:30 p.m.		

Jack's Pond Park Corral

986 LA MOREE ROAD

Park Features

- Up to 100 People
- Open lawn area
- Playground
- Nature Center
- Trails
- Restrooms
- ✔ Pony Rides/Petting Zoo Permitted
- ✘ No Jumpouse Permitted
- ✘ No BBQ



RESERVATION TYPE	Flat Rate	Peak Season Flat Rate	Non Peak Season Flat Rate
Medium 50-100 people	FOUR HOUR \$103	FULL DAY \$155	FULL DAY \$103
PEAK SEASON: Apr. 1 – Oct. 31 NON-PEAK SEASON: Nov. 1 – Mar. 31			
FOUR HOUR TIME SLOTS 9 a.m.-1 p.m. or 1:30-5:30 p.m.	FULL DAY TIME FRAME 9 a.m.-5:30 p.m.		

Discovery Lakeview Gazebo

650 FOXHALL DRIVE

Park Features

- Up to 100 People
- 4 Sheltered Tables
- Playground
- Splash Pad
- Restrooms
- Trails
- ⊗ **No Jumprose Permitted**



RESERVATION TYPE	Flat Rate	Peak Season Flat Rate	Non Peak Season Flat Rate
Medium 50-100 people	FOUR HOUR \$103	FULL DAY \$155	FULL DAY \$103
PEAK SEASON: Apr. 1 – Oct. 31 NON-PEAK SEASON: Nov. 1 – Mar. 31			
FOUR HOUR TIME SLOTS 9 a.m.-1 p.m. or 1:30-5:30 p.m.	FULL DAY TIME FRAME 9 a.m.-5:30 p.m.		

Las Abejas Park

999 WOODHAVEN ROAD

Park Features

- Up to 100 People
- 2 Sheltered Tables
- 2 Unsheltered Tables
- Playground
- Trails
- Restrooms
- 1 BBQ
- ✔ Jumpers Permitted



RESERVATION TYPE	Flat Rate	Peak Season Flat Rate	Non Peak Season Flat Rate
Medium 50-100 people	FOUR HOUR \$103	FULL DAY \$155	FULL DAY \$103
PEAK SEASON: Apr. 1 – Oct. 31 NON-PEAK SEASON: Nov. 1 – Mar. 31			
FOUR HOUR TIME SLOTS 9 a.m.-1 p.m. or 1:30-5:30 p.m.	FULL DAY TIME FRAME 9 a.m.-5:30 p.m.		

Las Posas Park

1387 W BORDEN ROAD

Park Features

- Up to 50 People
- 1 Sheltered Table
- 1/2 Basketball Court
- 2 Tennis Courts
- Soccer Field
- Multipurpose Field
- Restrooms
- 1 BBQ
- ⊗ **No Jumpers Permitted**



RESERVATION TYPE	Flat Rate	Peak Season Flat Rate	Non Peak Season Flat Rate
Small 0-50 people	\$82	\$124	\$82
PEAK SEASON: Apr. 1 – Oct. 31 NON-PEAK SEASON: Nov. 1 – Mar. 31			
FOUR HOUR TIME SLOTS 9 a.m.–1 p.m. or 1:30–5:30 p.m.	FULL DAY TIME FRAME 9 a.m.–5:30 p.m.		

Mulberry Park Shelter

751 MULBERRY DRIVE

Park Features

- Up to 50 People
- 2 Un-Sheltered Tables
- Picnic Tables
- Playground
- Splash Pad
- Restrooms
- Turf Play
- ⊗ **No Jumpers Permitted**



RESERVATION TYPE	Flat Rate	Peak Season Flat Rate	Non Peak Season Flat Rate
	FOUR HOUR	FULL DAY	FULL DAY
Small 0-50 people	\$82	\$124	\$82
PEAK SEASON: Apr. 1 – Oct. 31 NON-PEAK SEASON: Nov. 1 – Mar. 31			
FOUR HOUR TIME SLOTS 9 a.m.–1 p.m. or 1:30–5:30 p.m.	FULL DAY TIME FRAME 9 a.m.–5:30 p.m.		

San Elijo Park Gazebo

1105 ELFIN FOREST ROAD

Park Features

- Up to 200 People
- 5 Sheltered Tables
- 2 Horseshoe Pits
- 2 Softball Fields
- 1 Multipurpose Field
- Playground
- Splash Pad
- Restrooms
- Fenced Off-Leash Dog Park
- ✔ Jumpers Permitted



RESERVATION TYPE	Flat Rate	Peak Season Flat Rate	Non Peak Season Flat Rate
Large 100-200 people	FOUR HOUR \$129	FULL DAY \$191	FULL DAY \$129
PEAK SEASON: Apr. 1 – Oct. 31 NON-PEAK SEASON: Nov. 1 – Mar. 31			
FOUR HOUR TIME SLOTS 9 a.m.–1 p.m. or 1:30–5:30 p.m.	FULL DAY TIME FRAME 9 a.m.–5:30 p.m.		

San Elijo Park Shelter

1105 ELFIN FOREST ROAD

Park Features

- Up to 100 People
- 3 Sheltered Tables
- 2 Horseshoe Pits
- 2 Softball Fields
- 1 Multipurpose Field
- Playground
- Splash Pad
- Restrooms
- Fenced Off-Leash Dog Park
- ⊗ **No Jumpers Permitted**



RESERVATION TYPE	Flat Rate	Peak Season Flat Rate	Non Peak Season Flat Rate
Medium 50–100 people	FOUR HOUR \$103	FULL DAY \$155	FULL DAY \$103
PEAK SEASON: Apr. 1 – Oct. 31 NON-PEAK SEASON: Nov. 1 – Mar. 31			
FOUR HOUR TIME SLOTS 9 a.m.–1 p.m. or 1:30–5:30 p.m.	FULL DAY TIME FRAME 9 a.m.–5:30 p.m.		

Simmons Park

2180 ROCKY POINT DR.

Park Features

- Up to 50 People
- 3 Uncovered Tables
- 1 Basketball Court
- Playground
- Restrooms
- 5 BBQ's
- ✔ Jumpers Permitted



RESERVATION TYPE	Flat Rate	Peak Season Flat Rate	Non Peak Season Flat Rate
Small 0-50 people	FOUR HOUR \$82	FULL DAY \$124	FULL DAY \$82
PEAK SEASON: Apr. 1 – Oct. 31 NON-PEAK SEASON: Nov. 1 – Mar. 31			
FOUR HOUR TIME SLOTS 9 a.m.-1 p.m. or 1:30-5:30 p.m.	FULL DAY TIME FRAME 9 a.m.-5:30 p.m.		

Sunset Park East Shelter

909 PUESTA DEL SOL (EAST)

Park Features

- Up to 100 People
- 2 Sheltered Tables and 2 Uncovered
- 1 Volleyball Court
- 1/2 Basketball Courts
- 1 Soccer Arena
- 3 Multipurpose Field
- Disc Golf Course
- Playground
- Splash Pad
- Restrooms
- Fenced Off-Leash Dog Park
- BBQ

⊗ **No Jumphouse Permitted**



RESERVATION TYPE	Flat Rate	Peak Season Flat Rate	Non Peak Season Flat Rate
Medium 50–100 people	FOUR HOUR \$103	FULL DAY \$155	FULL DAY \$103
PEAK SEASON: Apr. 1 – Oct. 31 NON-PEAK SEASON: Nov. 1 – Mar. 31			
FOUR HOUR TIME SLOTS 9 a.m.–1 p.m. or 1:30–5:30 p.m.	FULL DAY TIME FRAME 9 a.m.–5:30 p.m.		

Sunset Park West Shelter

3337 LA MIRADA DR. (WEST)

Park Features

- Up to 200 People
- 8 Sheltered Tables
- 1 Volleyball Court
- 1/2 Basketball Courts
- 1 Soccer Arena
- 3 Multipurpose Field
- Disc Golf Course
- Playground
- Splash Pad
- Restrooms
- Fenced Off-leash Dog Park
- ⊗ **No Jumprose Permitted**



RESERVATION TYPE	Flat Rate	Peak Season Flat Rate	Non Peak Season Flat Rate
	FOUR HOUR	FULL DAY	FULL DAY
Large 100-200 people	\$129	\$191	\$129
PEAK SEASON: Apr. 1 – Oct. 31 NON-PEAK SEASON: Nov. 1 – Mar. 31			
FOUR HOUR TIME SLOTS 9 a.m.–1 p.m. or 1:30–5:30 p.m.	FULL DAY TIME FRAME 9 a.m.–5:30 p.m.		

Walnut Grove Park North Shelter

1950 SYCAMORE DRIVE

Park Features

- Up to 100 People
- 2 Sheltered Tables
- 2 Horse Arenas
- Soccer Fields
- Disc Golf Course
- Playground
- Restrooms
- ✔ **Jumphouse Permitted**



RESERVATION TYPE	Flat Rate	Peak Season Flat Rate	Non Peak Season Flat Rate
	FOUR HOUR	FULL DAY	FULL DAY
Medium 50-100 people	\$103	\$155	\$103
PEAK SEASON: Apr. 1 – Oct. 31 NON-PEAK SEASON: Nov. 1 – Mar. 31			
FOUR HOUR TIME SLOTS 9 a.m.–1 p.m. or 1:30–5:30 p.m.	FULL DAY TIME FRAME 9 a.m.–5:30 p.m.		

Walnut Grove Park South Shelter

1950 SYCAMORE DRIVE

Park Features

- Up to 200 People
- 5 Sheltered Tables
- 2 Horse Arenas
- Soccer Fields
- Disc Golf Course
- Playground
- Restrooms
- ✔ **Jumphouse Permitted**



RESERVATION TYPE	Flat Rate	Peak Season Flat Rate	Non Peak Season Flat Rate
	FOUR HOUR	FULL DAY	FULL DAY
Large 100-200 people	\$129	\$191	\$129
PEAK SEASON: Apr. 1 – Oct. 31 NON-PEAK SEASON: Nov. 1 – Mar. 31			
FOUR HOUR TIME SLOTS 9 a.m.–1 p.m. or 1:30–5:30 p.m.	FULL DAY TIME FRAME 9 a.m.–5:30 p.m.		

Walnut Grove Park Central Shelter

1950 SYCAMORE DRIVE

Park Features

- Up to 200 People
- 4 Sheltered Tables
- 2 Horse Arenas
- Soccer Fields
- Disc Golf Course
- Playground
- Restrooms
- ✓ **Jumphouse and Pony Rides/Petting Zoos Permitted**



RESERVATION TYPE	Flat Rate	Peak Season Flat Rate	Non Peak Season Flat Rate
Large 100-200 people	FOUR HOUR \$129	FULL DAY \$191	FULL DAY \$129
PEAK SEASON: Apr. 1 – Oct. 31 NON-PEAK SEASON: Nov. 1 – Mar. 31			
FOUR HOUR TIME SLOTS 9 a.m.–1 p.m. or 1:30–5:30 p.m.		FULL DAY TIME FRAME 9 a.m.–5:30 p.m.	

Woodland Park Pepper Shelter

671 WOODLAND PKWY.

Park Features

- Up to 200 People
- 1 Sheltered Table
- 9 Tennis Courts
- Playground
- Restrooms
- ✓ **Jumphouse Permitted**



RESERVATION TYPE	Flat Rate	Peak Season Flat Rate	Non Peak Season Flat Rate
	FOUR HOUR	FULL DAY	FULL DAY
Large 100-200 people	\$129	\$191	\$129
PEAK SEASON: Apr. 1 – Oct. 31 NON-PEAK SEASON: Nov. 1 – Mar. 31			
FOUR HOUR TIME SLOTS 9 a.m.–1 p.m. or 1:30–5:30 p.m.	FULL DAY TIME FRAME 9 a.m.–5:30 p.m.		

Woodland Park West Shelter

671 WOODLAND PKWY.

Park Features

- Up to 50 People
- 1 Sheltered Table
- 9 Tennis Courts
- Playground
- Restrooms
- ✔ **Jumphouse Permitted**



RESERVATION TYPE	Flat Rate	Peak Season Flat Rate	Non Peak Season Flat Rate
	FOUR HOUR	FULL DAY	FULL DAY
Small 0–50 people	\$82	\$124	\$82
PEAK SEASON: Apr. 1 – Oct. 31 NON-PEAK SEASON: Nov. 1 – Mar. 31			
FOUR HOUR TIME SLOTS 9 a.m.–1 p.m. or 1:30–5:30 p.m.	FULL DAY TIME FRAME 9 a.m.–5:30 p.m.		

Woodland Park Schoolside Shelter

671 WOODLAND PKWY.

Park Features

- Up to 100 People
- 2 Sheltered Tables
- 9 Tennis Courts
- Playground
- Restrooms
- ✓ **Jumphouse Permitted**



RESERVATION TYPE	Flat Rate	Peak Season Flat Rate	Non Peak Season Flat Rate
Medium 50–100 people	FOUR HOUR \$103	FULL DAY \$155	FULL DAY \$103
PEAK SEASON: Apr. 1 – Oct. 31 NON-PEAK SEASON: Nov. 1 – Mar. 31			
FOUR HOUR TIME SLOTS 9 a.m.–1 p.m. or 1:30–5:30 p.m.	FULL DAY TIME FRAME 9 a.m.–5:30 p.m.		

Woodland Park East Shelter

671 WOODLAND PKWY.

Park Features

- Up to 100 People
- 2 Sheltered Tables
- 9 Tennis Courts
- Playground
- Restrooms
- BBQ
- ⊗ **No Jumphouse Permitted**



RESERVATION TYPE	Flat Rate	Peak Season Flat Rate	Non Peak Season Flat Rate
Medium 50-100 people	FOUR HOUR \$103	FULL DAY \$155	FULL DAY \$103
PEAK SEASON: Apr. 1 – Oct. 31 NON-PEAK SEASON: Nov. 1 – Mar. 31			
FOUR HOUR TIME SLOTS 9 a.m.-1 p.m. or 1:30-5:30 p.m.	FULL DAY TIME FRAME 9 a.m.-5:30 p.m.		

Woodland Park North Shelter

671 WOODLAND PKWY.

Park Features

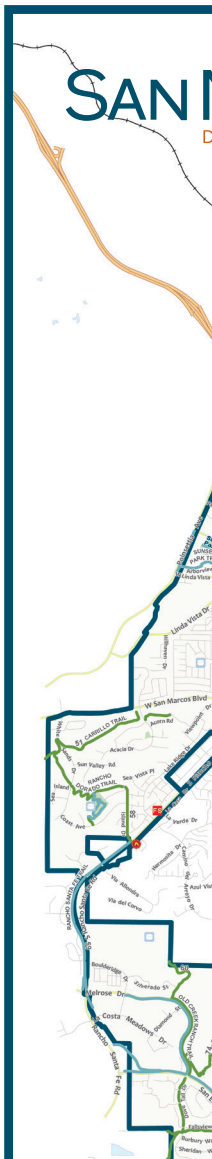
- Up to 100 People
- 1 Sheltered Tables
- 9 Tennis Courts
- Playground
- Restrooms
- BBQ
- ⊗ **No Jumphouse Permitted**



RESERVATION TYPE	Flat Rate	Peak Season Flat Rate	Non Peak Season Flat Rate
	FOUR HOUR	FULL DAY	FULL DAY
Medium 50-100 people	\$103	\$155	\$103
PEAK SEASON: Apr. 1 – Oct. 31 NON-PEAK SEASON: Nov. 1 – Mar. 31			
FOUR HOUR TIME SLOTS 9 a.m.-1 p.m. or 1:30-5:30 p.m.	FULL DAY TIME FRAME 9 a.m.-5:30 p.m.		

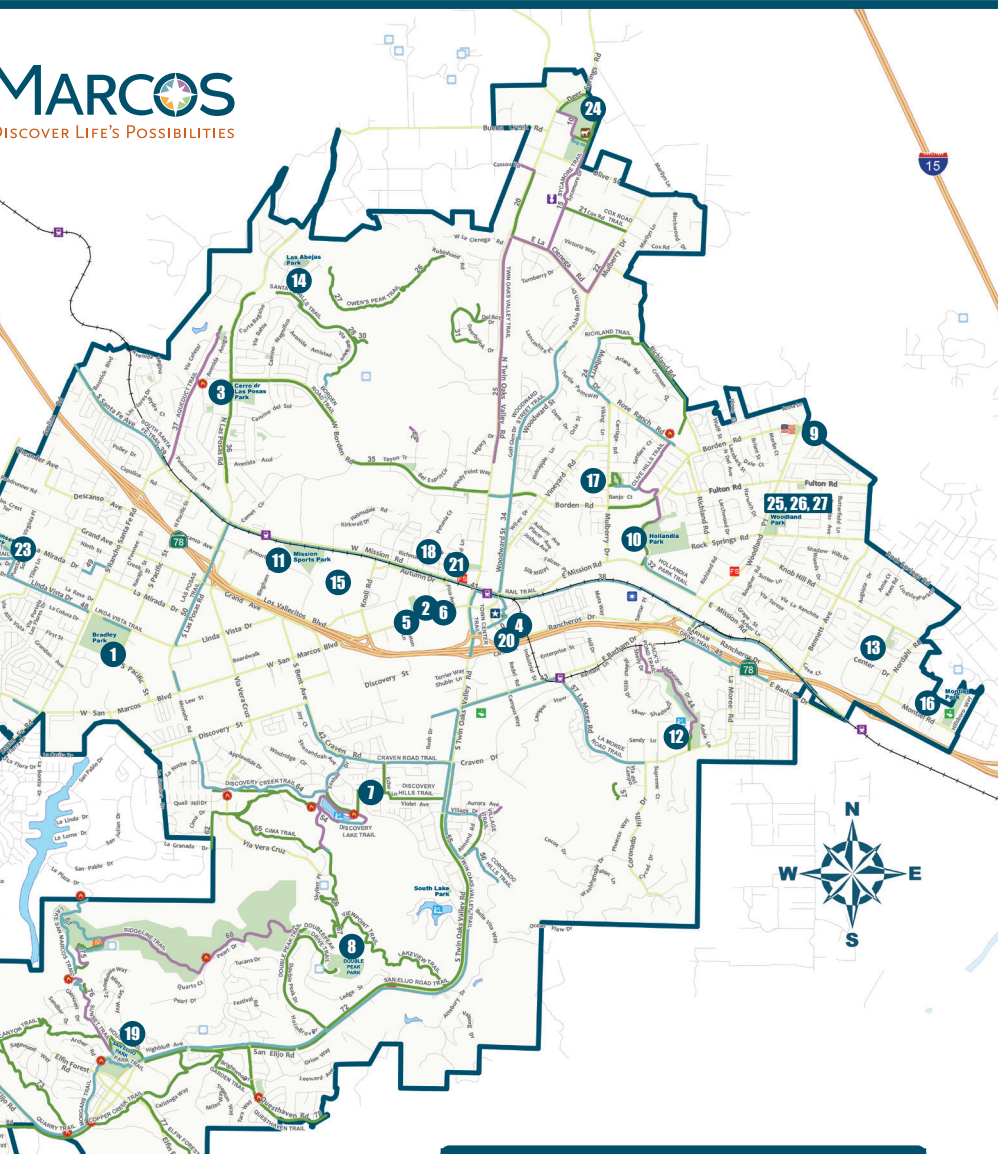
Parks and Facilities

		Picnic Area	Play-ground	Restrooms	Field	Trails	Dog Park	Splashpad/ pool	Skate Park	Rentals	Other
1	Bradley Park 1587 Linda Vista Drive	PT S	●	●	MP SA						BQ H
2	Buelow Park 300 Autumn Drive	PT S	●	●		TC		SP		SR	BB
3	Cerro de Las Posas Park 1387 W. Borden Road	PT SR		●	MP	TC		SP P		SR	BQ TE
4	Civic Center Park 3 Civic Center Park	PT S	●			TC					BB VB
5	Connors Park 320 W. San Marcos Blvd.	PT S	●	●	MP				●	SR	BB PB TE
6	Corky Smith Gymnasium 274 Pico Avenue			●						FR	BB PB VB
7	Discovery/Lakeview Park 650 Foxhall Drive	PT S	●	●		TC		SP		SR	
8	Double Peak Park 910 Double Peak Drive	PT S	●	●		TC				SR	A
9	Helen Bougher Memorial Park 1243 Borden Road	PT									VW
10	Hollandia Park 12 Mission Hills Court	PT S	●	●	LB MU	TC	●		●	SR	BQ A, H
11	Innovation Park 1151 Armormite Drive	PT S	●	●			●				PB
12	Jack's Pond Park & Nature Center 986 La Moree Road	PT S	●	●		TC				SR	NC
13	Knob Hill Park 860 Avenida Ricardo	PT S	●								
14	Las Abejas Park 999 Woodhaven Road	PT S	●	●		●				SR	
15	Mission Sports Complex 931 Bailey Court	PT S	●	●	MU LB						
16	Montiel Park 2290 Montiel Road	PT	●	●			●				BB DG
17	Mulberry Park 751 Mulberry Drive	PT	●	●		TC		SP			BQ
18	Richmar Park 110 Richmar Avenue	PT S	●	●							
19	San Elijo Park & Recreation Center 1105 Elfin Forest Road	PT S	●	●	LB MP	TC	●	SP		FR SR	BQ H, S
20	San Marcos Community Center 3 Civic Center Drive		●	●		TC				FR	A
21	Senior Activity Center & Mark J. Noy Jr. Adult Fitness Zone 111 Richmar Avenue	PT		●						FR	FE
22	Simmons Park 2180 Rocky Point Drive	PT S	●	●		TC				SR	BB BQ
23	Sunset Park 1909 Puesta del Sol	S	●	●	MP SA	TC	●	SP		SR SA	DG VB
24	Walnut Grove Park, Williams Barn & Horse Arenas 1950 Sycamore Drive	PT S	●	●	MP MU	TC				FR SA SR	BQ HA
25	Woodland Park & Pool 671 Woodland Parkway	PT S	●	●				P		SR FR	BQ TE
26	Wood House 1148 Rock Springs Road			●						FR	
27	Community Garden 1263 Fulton Road										



LEGEND

- A Amphitheater
- BB Basketball Court
- BQ Barbeque
- DG Disc Golf
- FE Fitness Equipment
- FR Facility Rental
- H Horseshoe Court
- HA Horse Arena
- LB Lighted Ballfield
- MP Multipurpose Field
- MU Multiple Fields



SAN MARCOS PARKS & TRAILS

- P** Pool
- PB** Pickleball Court
- PT** Picnic Tables
- S** Shelters
- SA** Soccer Arena
- SP** Splashpad
- SR** Shelter Rental
- TC** Trail Connection
- TE** Tennis Court
- VB** Volleyball Court
- VW** Veteran's Memorial Wall

- City of San Marcos
- Railroads
- Sprinter
- TRAILS**
- Multi-Use
- Soft Surface
- Urban
- Fire Access Points
- Creeks
- Parks
- Lakes
- Communications Tower
- Fire Station
- Disc Golf
- Equestrian Access Point
- Fishing
- Government Offices/Civic Center
- Horse Arena
- Police/Sheriff
- Purple Heart Trail
- Veterans Memorial
- Water Tank



CONTACT US

For further information, please
reach out to us.

760-744-9000

ParksandRec@sanmarcosca.gov

3 Civic Center Drive,
San Marcos CA 92069

www.sanmarcosca.gov

SAN MARCOS
DISCOVER LIFE'S POSSIBILITIES

